

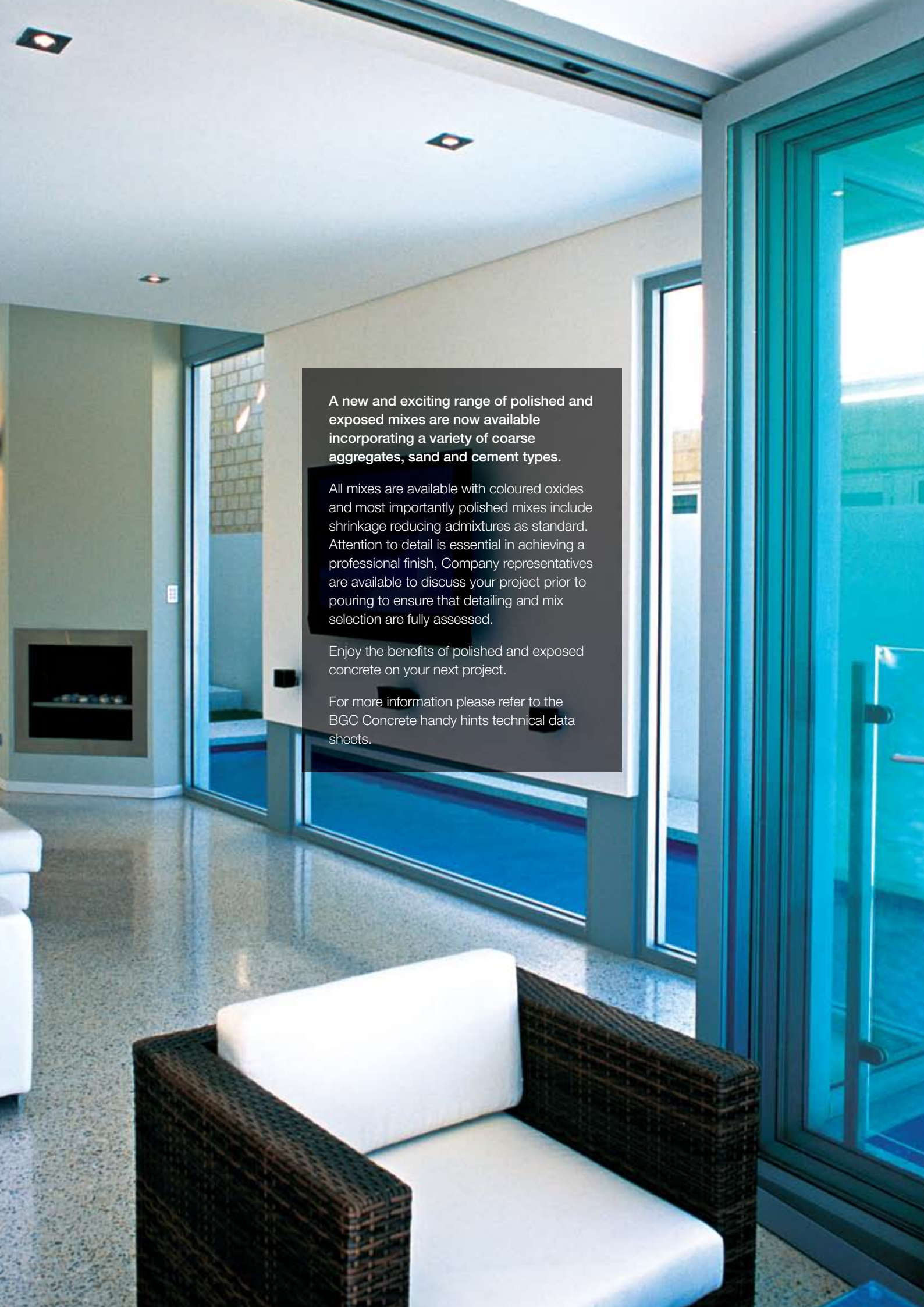


BGC POLISHED CONCRETE BRINGS A
STRIKING ARCHITECTURAL FEEL TO EVERY PROJECT



Concrete





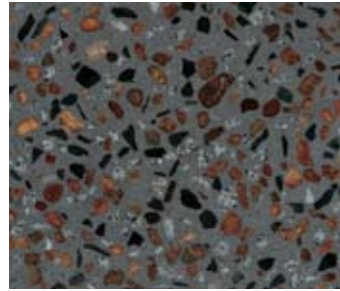
A new and exciting range of polished and exposed mixes are now available incorporating a variety of coarse aggregates, sand and cement types.

All mixes are available with coloured oxides and most importantly polished mixes include shrinkage reducing admixtures as standard. Attention to detail is essential in achieving a professional finish. Company representatives are available to discuss your project prior to pouring to ensure that detailing and mix selection are fully assessed.

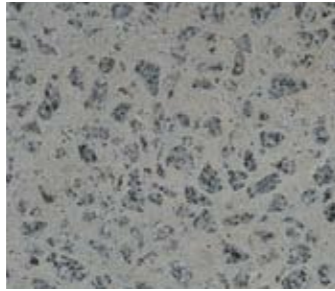
Enjoy the benefits of polished and exposed concrete on your next project.

For more information please refer to the BGC Concrete handy hints technical data sheets.

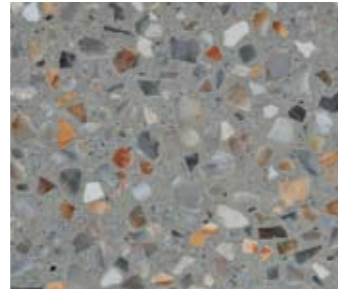
Polished Concrete Samples



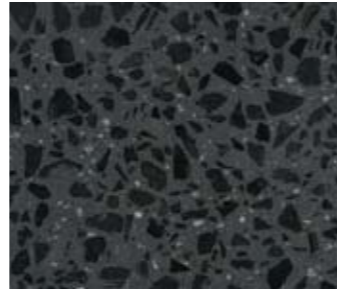
EX2510A5



EX2514A



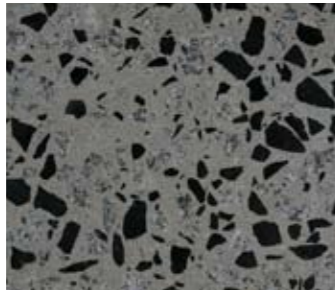
EX2514A3



EX2514A7



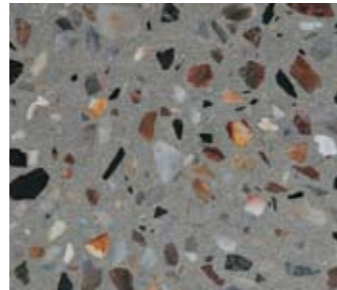
EX2514A12



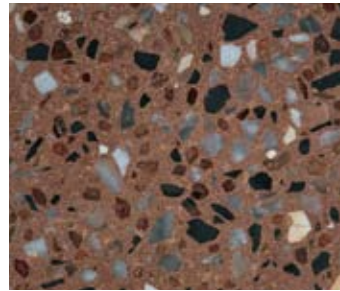
EX2514A16



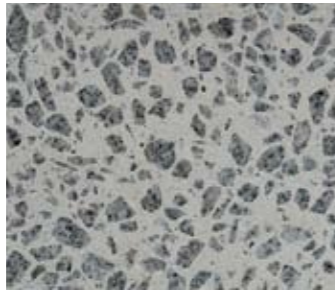
EX2514A18



EX2514A24



EX2514A30



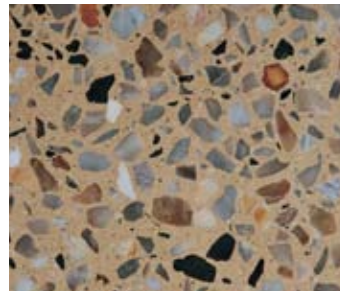
EX2514C



EX2514C1



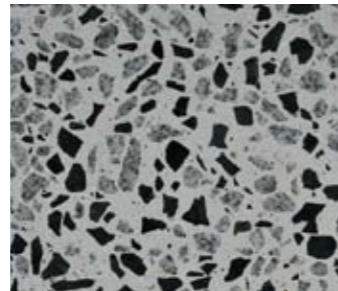
EX2514C2



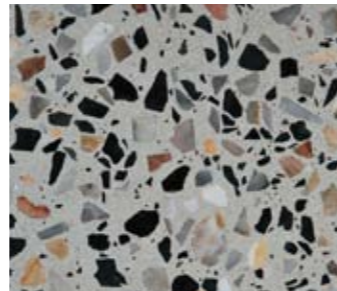
EX2514C3



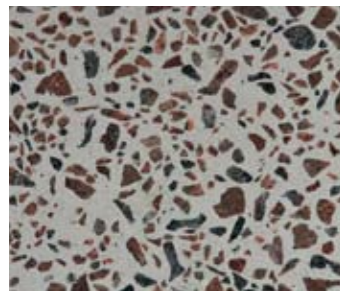
EX2514C7



EX2514C9



EX2514C12



EX2514C14

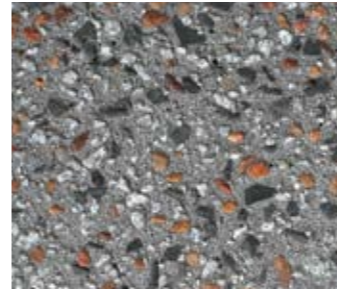


EX2514A33



EX2514C15

Exposed Concrete Samples



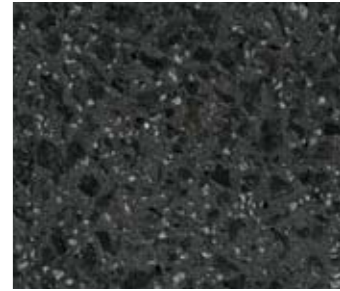
EX2510A5



EX2514A



EX2514A3



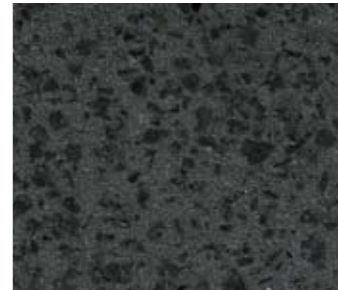
EX2514A7



EX2514A12



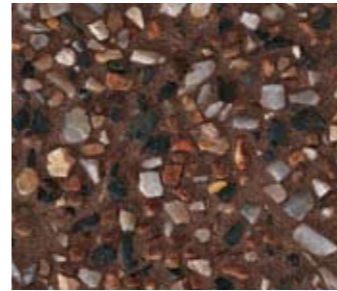
EX2514A16



EX2514A18



EX2514A24



EX2514A30



EX2514C



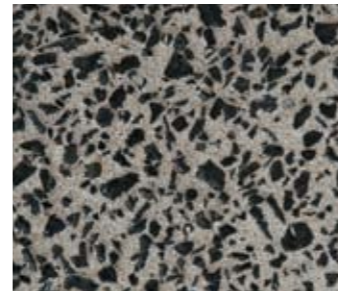
EX2514C1



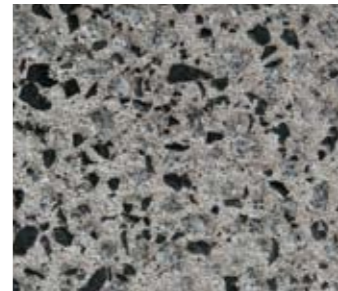
EX2514C2



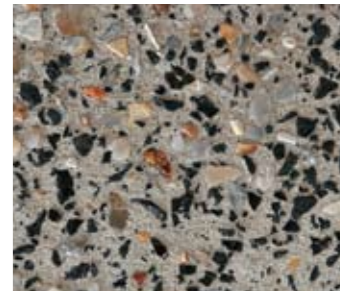
EX2514C3



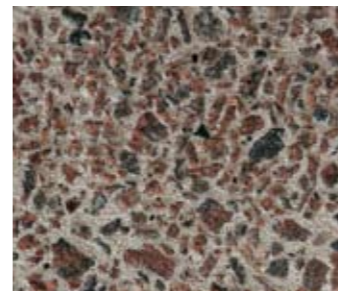
EX2514C7



EX2514C9



EX2514C12



EX2514C14



EX2514A33



EX2514C15

BGC Concrete's standard range of polished and exposed concrete mixes are photographed to provide an indication of the colours available. Variations can occur in shade as a result of print quality. Although we take all care and attention, we do not guarantee colour consistency throughout a particular project. Colour variations can be caused by many factors which are beyond our control, including the amount of water added on site, times and techniques of finishing, the period between pours, the age of the concrete, the curing environment and the source of raw materials.

BGC Concrete does not accept responsibility for the surface texture or finish achieved by installers. Ensure that loads are ordered in a timely manner and the construction joint layout accommodates the pour/load size requirement.

When ordering you need to quote the mix code and any coloured oxide if required, this allows BGC Concrete to identify the required mix.

BGC Concrete endorses safe environmental practice. If washing concrete please ensure any slurry is contained and disposed of thoughtfully, washed water should not be allowed to enter the drainage system or water course.







Concrete

BGC CONCRETE

For obligation free advice on your next project, call 9261 1899 and ask for a BGC Polished Concrete representative.
Fax: 9261 1895 Email: concrete@bgc.com.au BGC Concrete, P.O. Box 7223, Cloisters Square, Perth WA, 6850

